



Bike Walk Greenville: Advocating for mobility choices in Greenville County

Introductions



Jasmine Vanadore joined Bike Walk Greenville as the first paid executive director for the organization in May of 2024.

She is currently getting her PhD through Clemson and has a passion for studying the public health impacts of active transportation and recreation opportunities in the community.

Our Mission



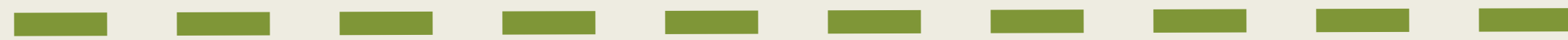
Bike Walk Greenville has been advocating for safe biking, walking and rolling infrastructure since 2013.

We believe that equitable, inclusive, multimodal transportation planning and design is a necessity for a healthy, vibrant community.





Our Vision:



A Greenville County where active transportation choices are safe and accessible for all.

Challenges to Our Mission/Vision

- Difficulty of retrofitting what is already built
- Political will
 - Appropriate funding
 - Understanding of the realities of current pedestrian conditions (victim blaming)
- Long timelines



The Cost of Car-Centric Design

- Decades of road designs that prioritize convenience and high speeds for motor vehicles has left us with roads that are 'Dangerous by Design'
- South Carolina ranks 3rd in the US for pedestrian traffic fatalities
- Improving walking conditions has positive impacts on the local economy, environment and community.



Source: Smart Growth America

The Range of Pedestrian Experiences in



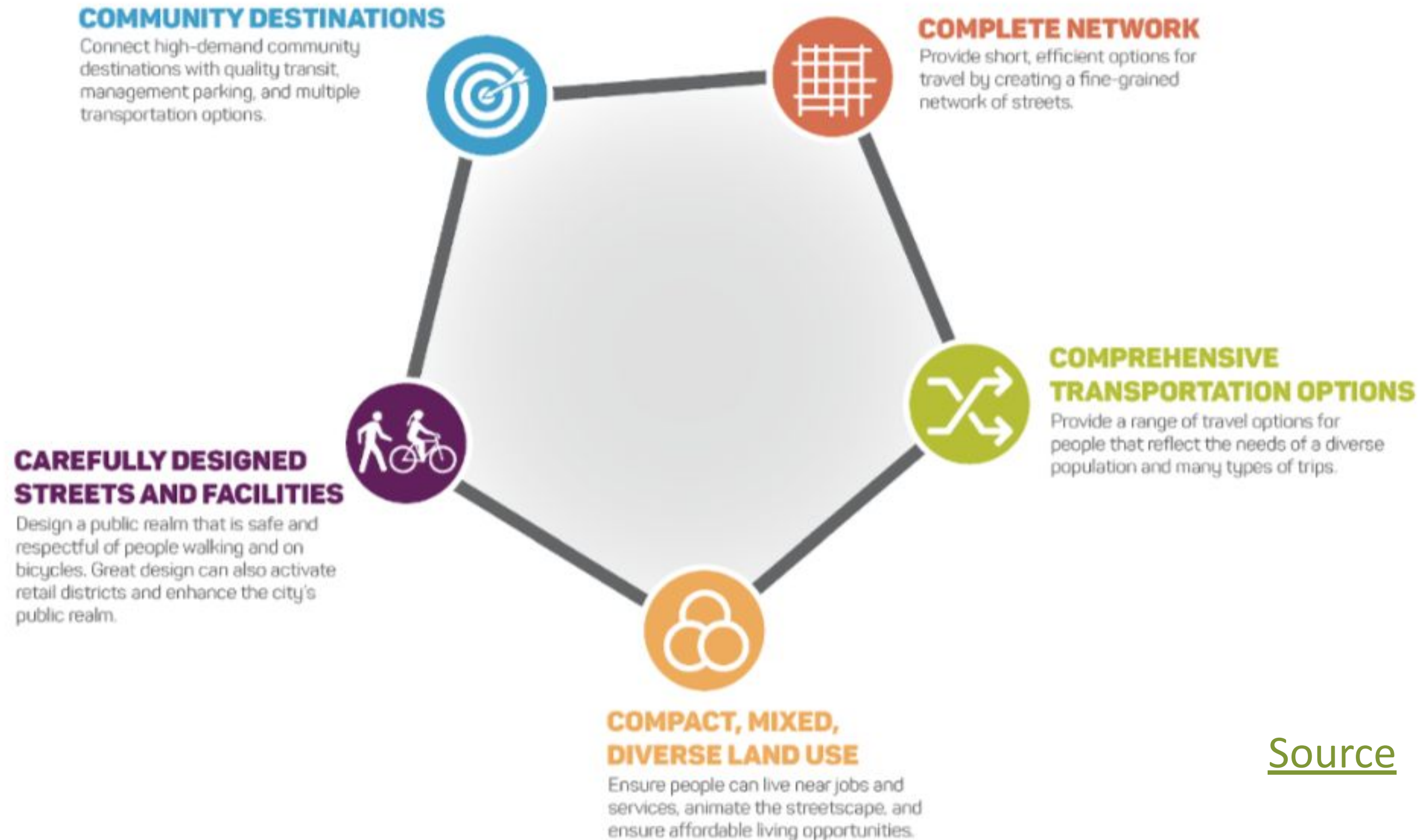
Examples of Zoning for

Walkability

1. Compact Development (density)
2. Varied Buildings
3. Mixed Use
4. Short Blocks
5. Reduced Setbacks and Parking Minimums

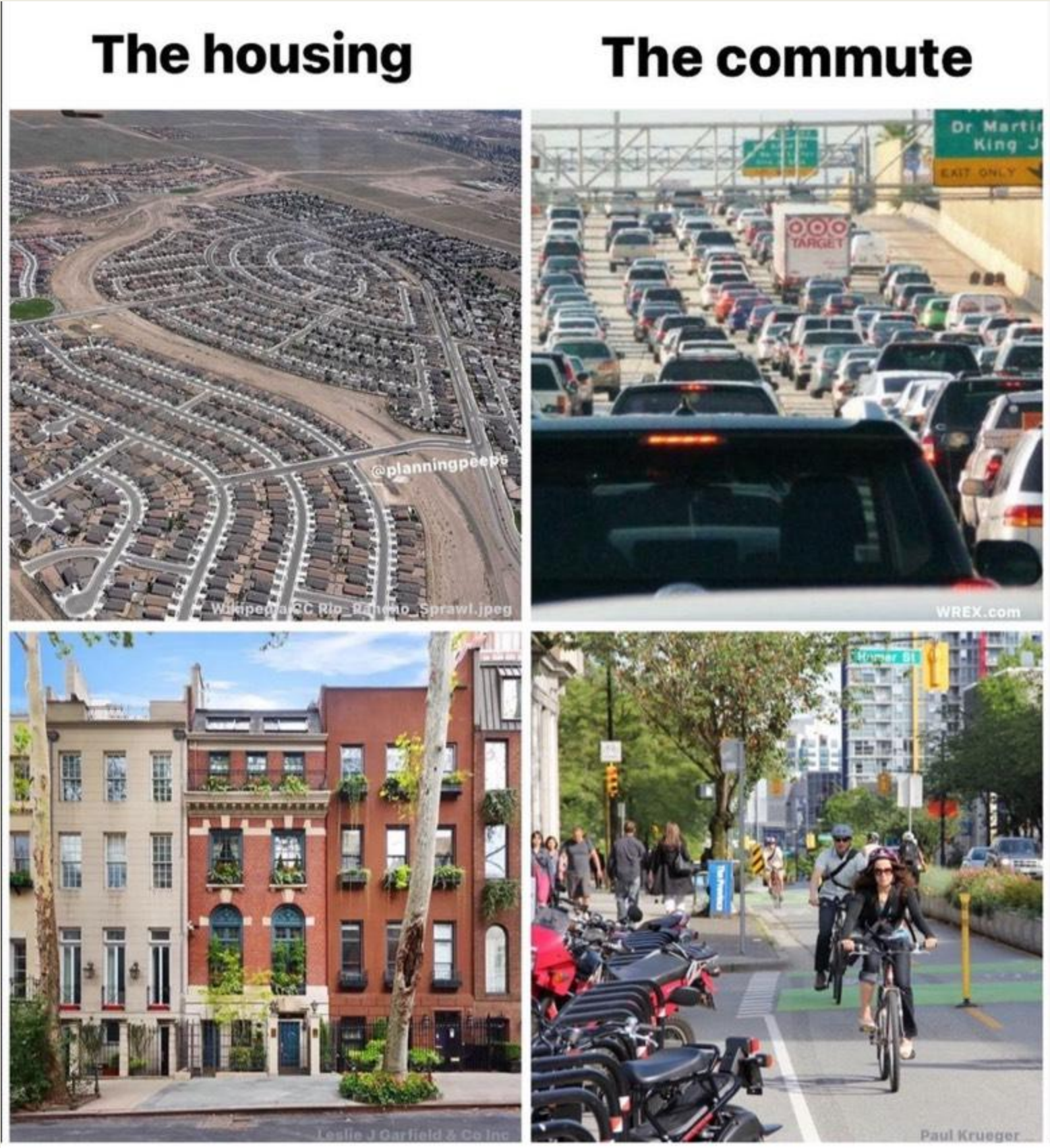
Land Use and Transportation Go Hand In

Hand



Source

Land Use and Transportation Go Hand In



Missing Middle Housing

- Missing Middle Housing is a range of house-scale building types with small to medium sized footprints
- “Something in between a house and an apartment”;
what many think of as a “starter home”
- Provide affordability and density
- Great for infill development
- Reduced parking requirements helps with walkability
- Contributes to walkable neighborhoods and reduced car dependency

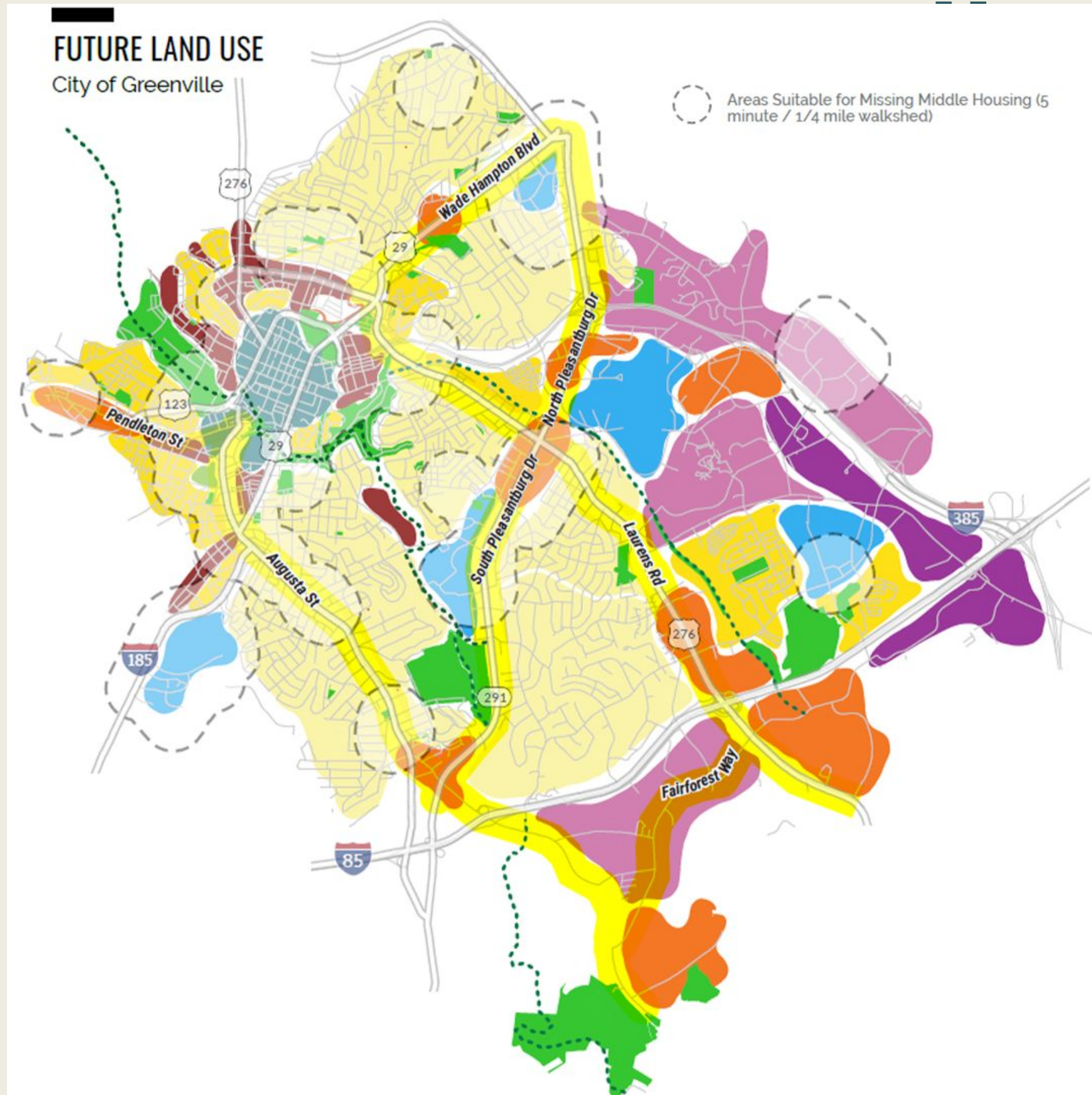
[MMH Study from 2020](#)
missingmiddlehousing.com



Types of Missing Middle Housing



Where Could Greenville Put Missing Middle



ing? — — — — —

- Greenville's Residential Neighborhood (RN) zoning designation was designed to allow missing middle housing.
- Currently, very little of the city is zoned for RN

[2023 Zoning Map \(GIS\)](#)

[Use Table for Zoning](#)

“We don’t want to be the next Atlanta or

Charlotte.”

Sprawl, y’all.



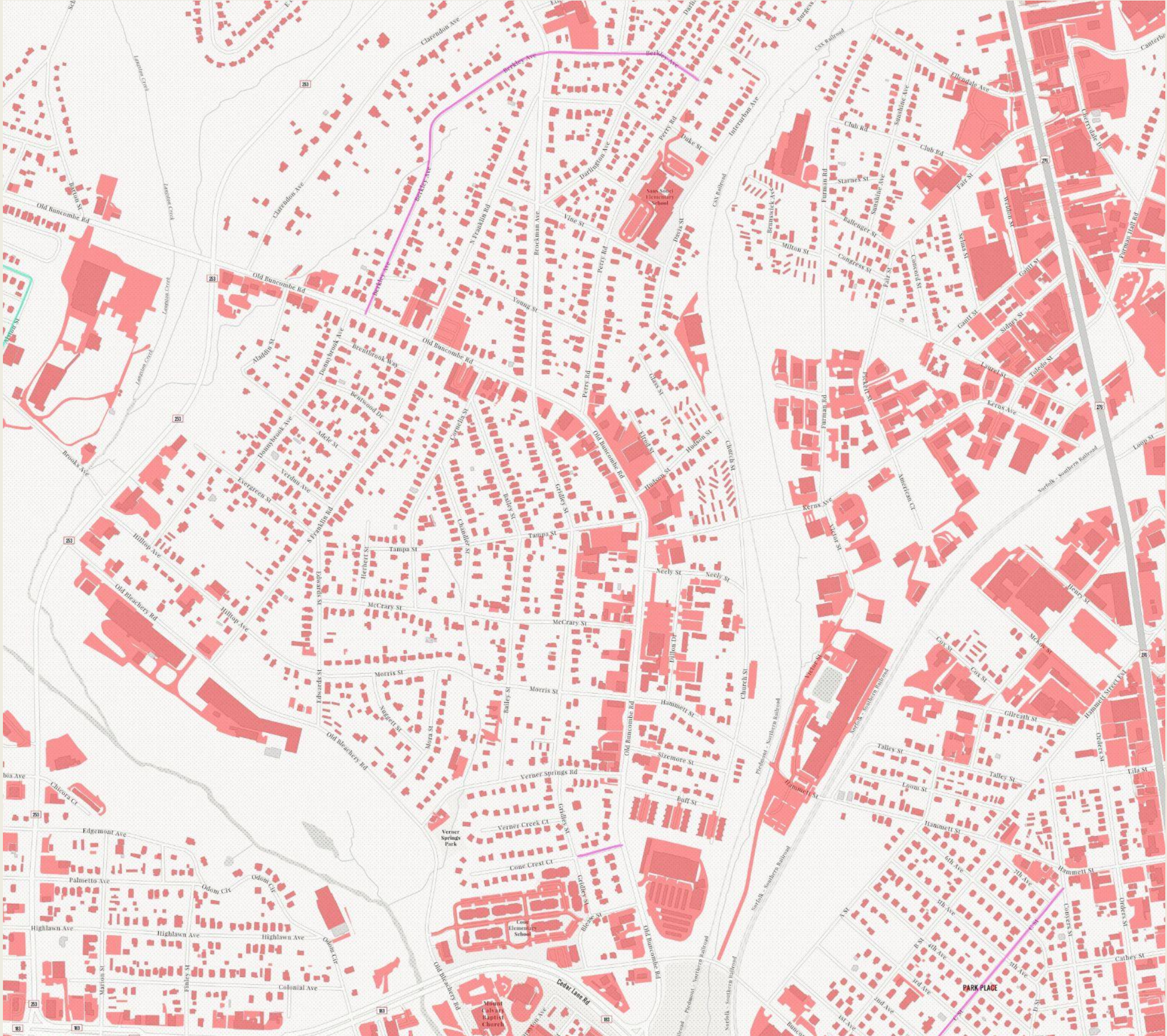
The High Cost of Free Parking

- Donald Shoup: “Free parking is a prime example of the Tragedy of the Commons”, in which competition for a free public good leads to destructive results.
- Parking minimums come at a cost that is paid for by the general public, not just drivers
 - Businesses have to raise prices on goods; housing becomes more expensive
- Guess how many parking spaces are available in the City of Greenville?
 - The total estimated square footage of parking spaces is ____

ParkingReform.org; Donald Shoup; parkade.com



Parking Minimums Induce More, and Longer, Car Trips

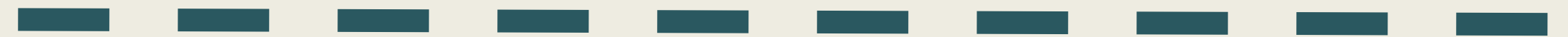


Setbacks and Land Use



- A front setback is the required distance between the front of a house and the sidewalk
- Many cities require a front setback of up to 30 feet
- Reducing these setback requirements allows property owners more flexibility in how to use their lot
- Buildings closer to the street improve the pedestrian experience; “human scale”
- A front porch with no set back encourages community interactions

What is a Stroad?



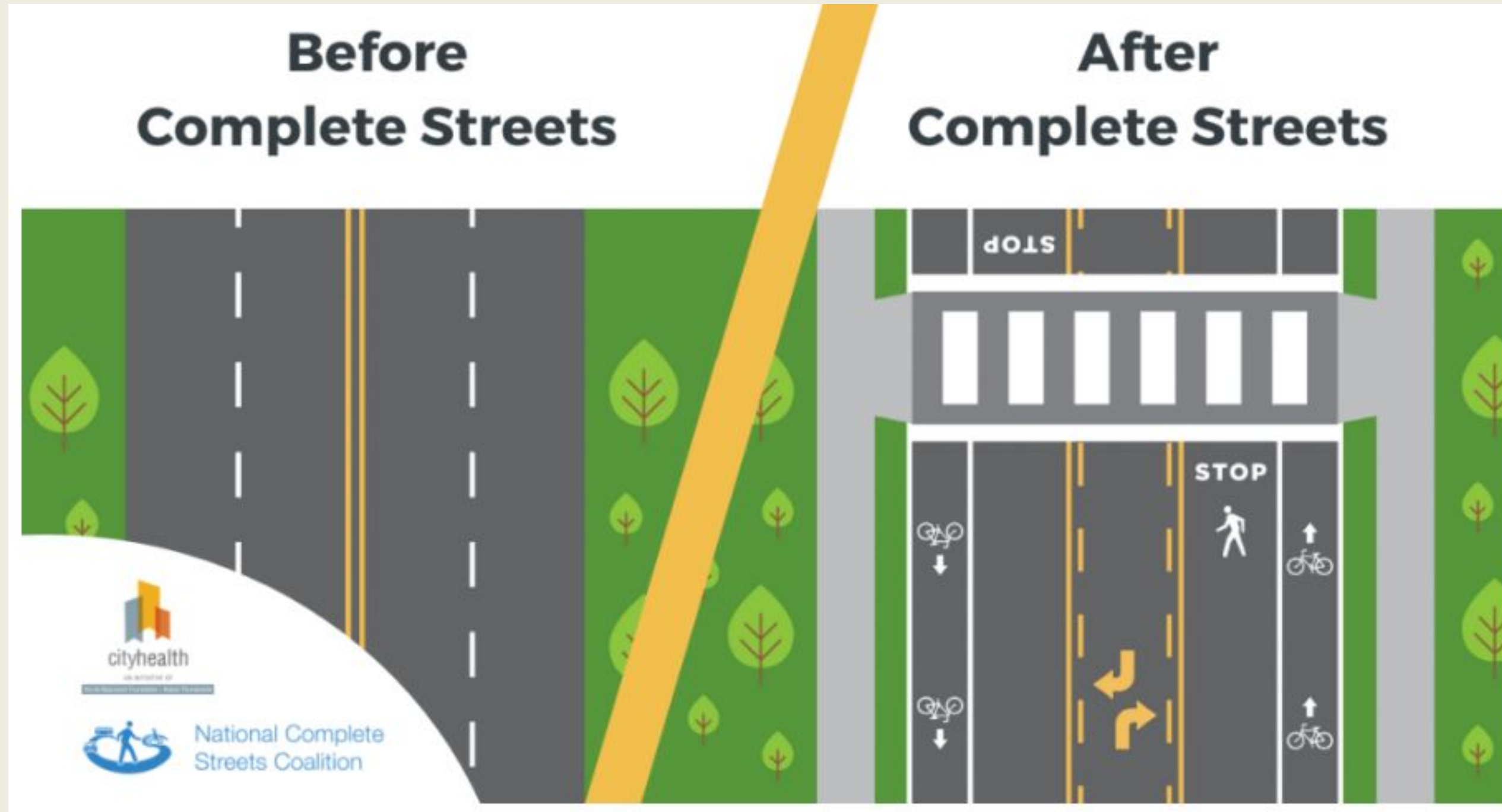
Wide, multi lane arterials designed to move cars at high speeds through a given area

however...

That 'given area' is full of businesses, intersections, and lots of human activity that clashes with high speed traffic.

- Name some Greenville stroads

Complete Streets Consider All Road



Source: Smart Growth America

Complete Streets Consider All Road

Users

- City of Greenville adopted a Complete Streets resolution in 2008
- SCDOT Complete Streets policy adopted in 2021

These policies are a step in the right direction, but in practice the box gets checked if for example a sidewalk is “present” (but narrow or in need of repair), or a bike lane is “considered” (but not possible due to existing road width)

Change is possible!



StrongTownns.org

Change is possible!



Change is possible!

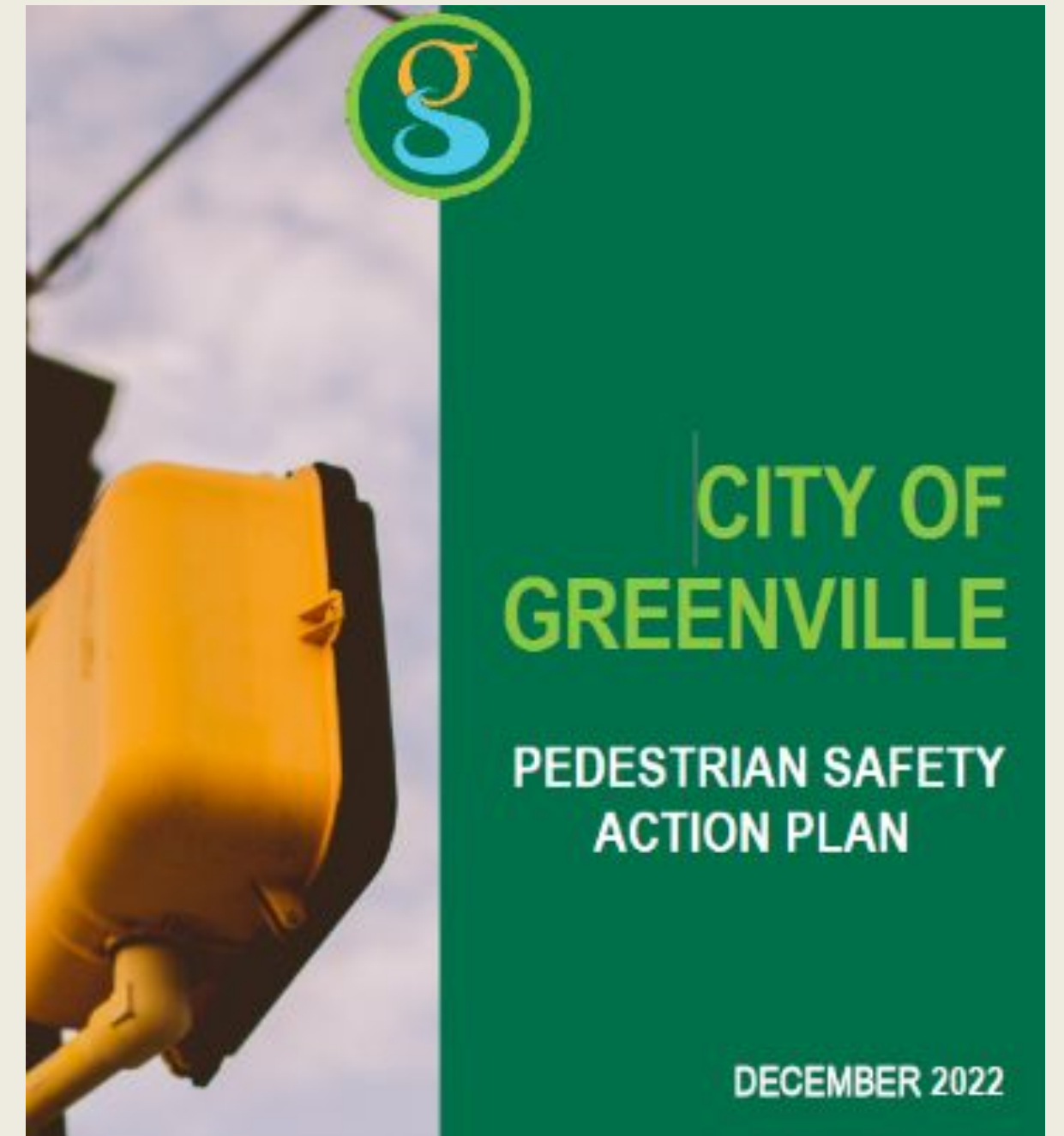


Change is possible!



Getting Involved: City of Greenville

- Safety issues that can be addressed
 - Greenville CARES: cares@greenvillesc.gov
 - Call or text: (864) 232-2273
- Calin Owens, Mobility Coordinator
 - cowens@greenvillesc.gov
- Get to know your City Council representative
- Public Input Meetings, Mobility Meetups
 - bit.ly/bwggcalendar



Greenville County

- Advocacy is harder outside of city limits
- Get to know your county council representative
- Ty Houck, Director of Greenways (Swamp Rabbit Trail)
 - thouck@greenvillecounty.org
 - 864-331-9631
- Record issues at bikemaps.org and walkrollmap.org
- Email us: info@bikewalkgreenville.org



Contacting SCDOT

- A large number of our roads are state owned
- To check road ownership:
 - bit.ly/whoseroadisit
- SCDOT has an online work order request form
 - apps.scdot.org/mwro/
 - Can report damaged/missing signage, overgrowth in Right of Way (ROW), damage to sidewalk, and other issues
 - Describe location/ intersection in comment, since map pins may not translate in work order

SCDOT Online Maintenance Request

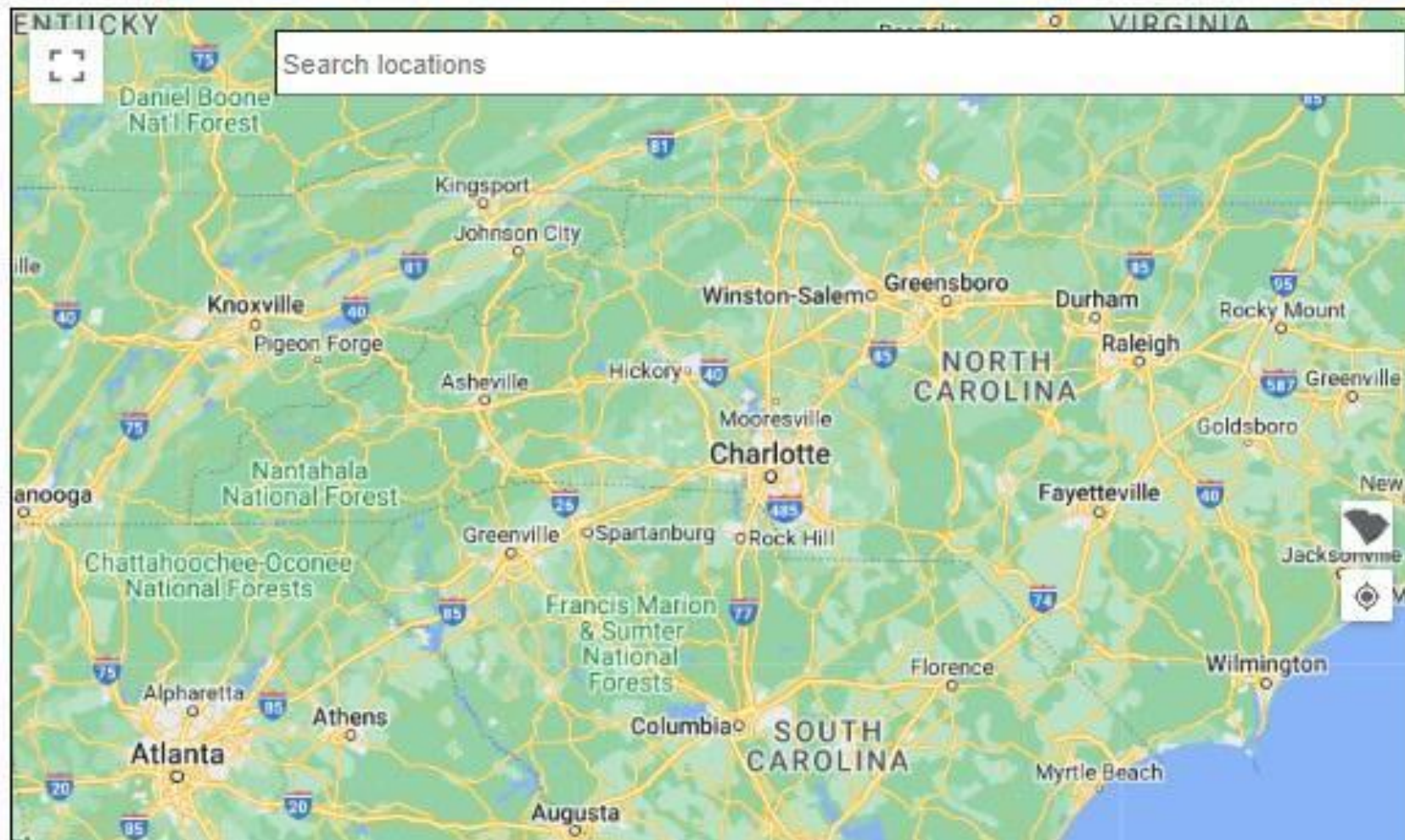
Maintenance Work Request

** Dial 911 if you have an emergency. **

Submitting a work request involves 4 steps:

- Identify work location on the map
- Tell us about the work
- Input/confirm contact information
- Submit

Click on map to identify work location



Tell us about the work

* = Required entry

Work Category *

Describe the nature of the maintenance work *

0/360

Describe the location of the maintenance work in more detail *

Provide contact information

Name *

Address *

Zip *

City *

State *

Area Code * Phone *

Email Address *

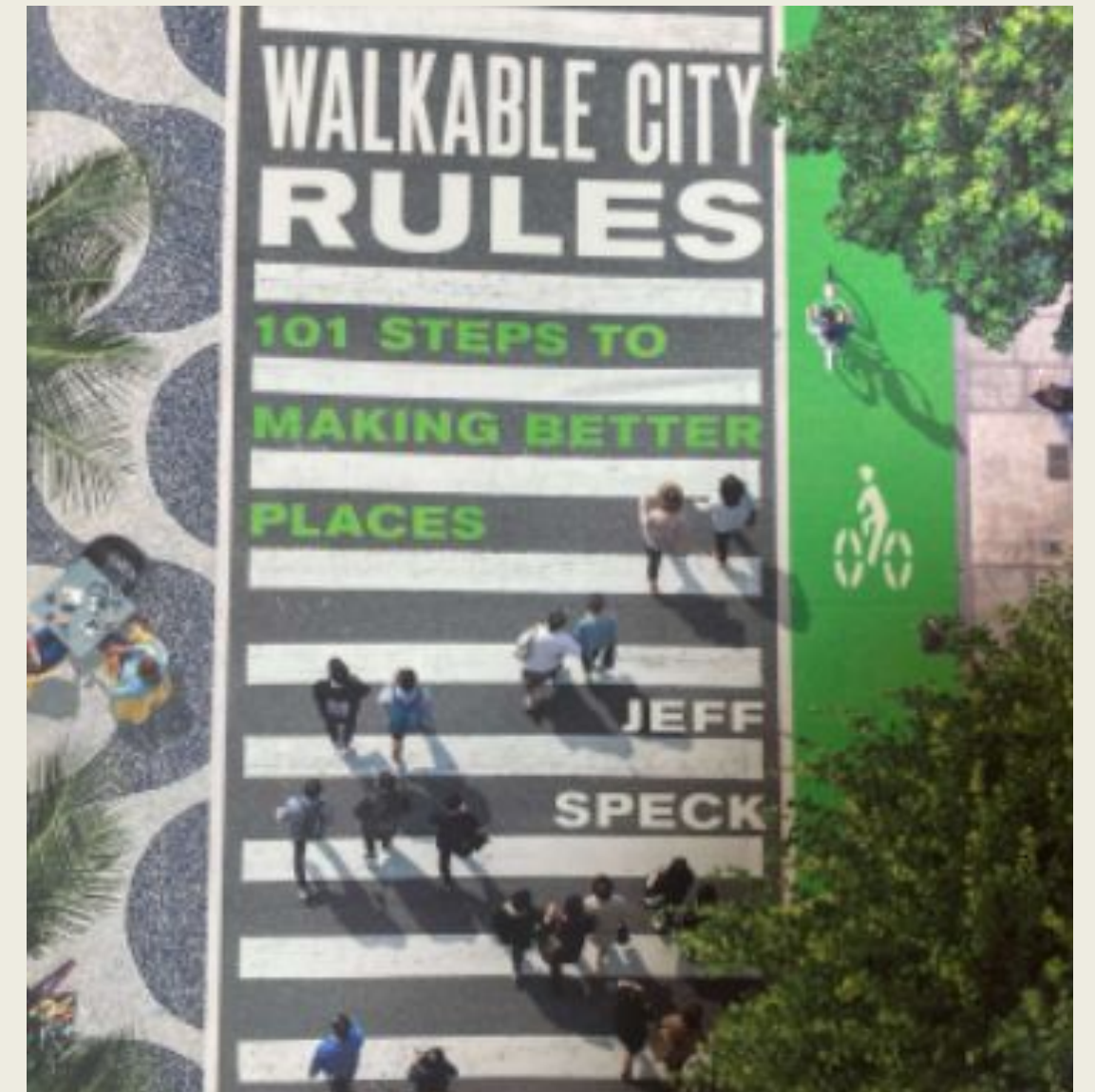
Learn More About Safe Streets Advocacy

Recommended reading:

Walkable City Rules by Jeff Speck

This book provides a breakdown of Safe Streets infrastructure concepts, main takeaways and talking points.

Now available through the Greenville County Library!



Feedback from a previous Walk Audit

"The consensus was that if you only get around by driving a car because of where you live and where you work, you are oblivious to the needs of people on foot."

"This exercise really opened my eyes about the impact of designing our cities for people, not just for cars."

Let's Stay in Touch!



Tag us on social media: @bikewalkgvl

Donate to support our work:

bikewalkgreenville.org/donate

Get our email newsletter: bit.ly/bwgnnews